

Grand Duchy of Luxembourg, the capital and its environment, worth a visit.



The Grand Duchy of Luxembourg has an enormous wealth of tourism opportunities, either by car, bicycle or on foot. There is something for everyone. Luxembourg city is primarily known for shopping, but also for visiting the remains of the old establishment and a pleasant walk along streets and squares.

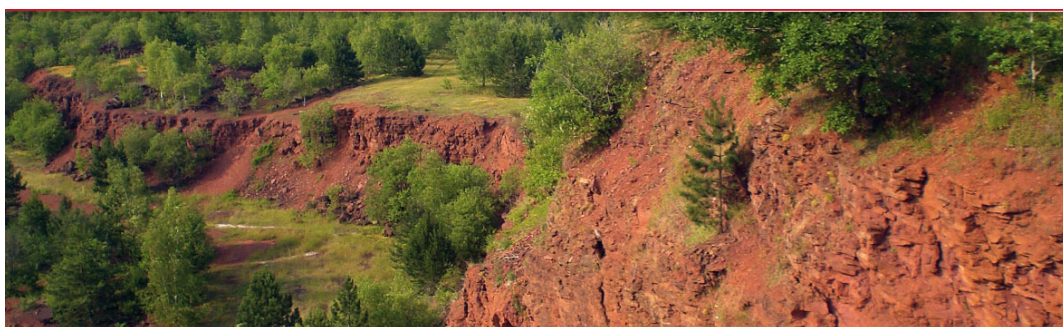
Those who rather explore the city on a cultural level, best start their trip at the Place de la Constitution, overlooking the valley of the Pétrusse and the Cathedral, Notre-Dame de Luxembourg.



Since 1994, the bulwarks and the old city were listed as UNESCO World Heritage sites.

Going towards the south, visitors will discover the "land of red earth." The deep red iron-containing soil contributes to the typical atmosphere of this area. This region, the triangle of Dudelange, Esch-sur-Alzette and Differange, has a rich industrial heritage and is also trendy and young. The mine installations, the miners' cafe and the two museums with historical heritage will catapult you back into the late 19th century.

Source: <http://www.lcto.lu>



Source : <http://www.wandelen-in-luxemburg.nl/5/TerreRouge.html>

Grand Duchy of Luxembourg, “hiking or cycling”

A selection of the many Gallo-Roman archaeological sites:



Goebange (15 km from Arlon / 22 km from Messancy): ruins of a “villa rustica” and Merovingian tombs. Open all year. Free entrance. Guided visits
tel. +352 30 96 64
e-mail gka@gka.lu
<http://en.wikipedia.org/wiki/Goebange>

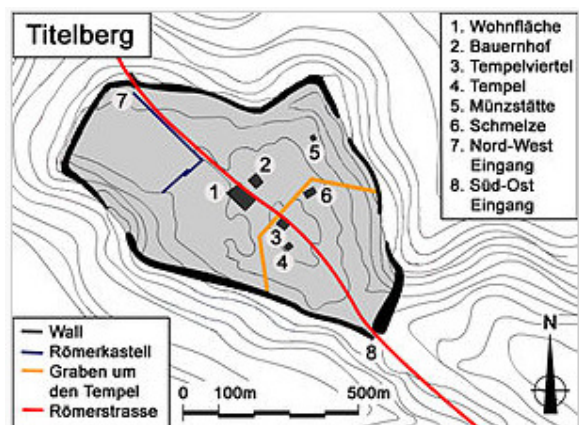


Mamer (15 km from Arlon / 21 km from Messancy): Vicus along the Roman road between Reims and Trier. The restored public baths are open all year. Free entrance.
<http://www.luxalbum.com/curiosites/romains/mamer.htm>

Steinsel (33 km from Arlon / 35 km from Messancy): Important sanctuary with multiple buildings. Open all year. Free entrance.
<http://www.luxalbum.com/curiosites/romains/steinsel.htm>



Titelberg / Rodange (19 km from Arlon / 9 km from Messancy): Great Trevi settlement surrounded by walls with a length of nearly 3 km.
<http://en.wikipedia.org/wiki/Titelberg>



Promenade “Valley of castles” (Ansembourg, Hollenfels, Useldange, Merch, Schoenfels, Septfontaines, Pettingen)

The walkway through the Valley of the Seven Castles is about 37 km along the winding Eisch valley and most important cultural treasures. Far away from the major traffic arteries, this tranquil setting with its land and forest roads is not only a paradise for hikers, but also for cyclists. There are over 200 km of footpaths and cycle paths available for energetic visitors.

Source: <http://www.septchateaux.lu>

Info: <http://www.ont.lu/spor-nl-6-27.html>



Useldange
(www.associationchateaux.lu)



Ansembourg
(www.flickrriver.com)



Hollenfels
(www.ssmn.public.lu)



Schoenfels
(www.ont.lu)



Mersch
(www.mersch.lu)



Septfontaines
(www.luxalbum.com)



Pettingen
(www.wikipedia.org)



Wishes you a pleasant stay.